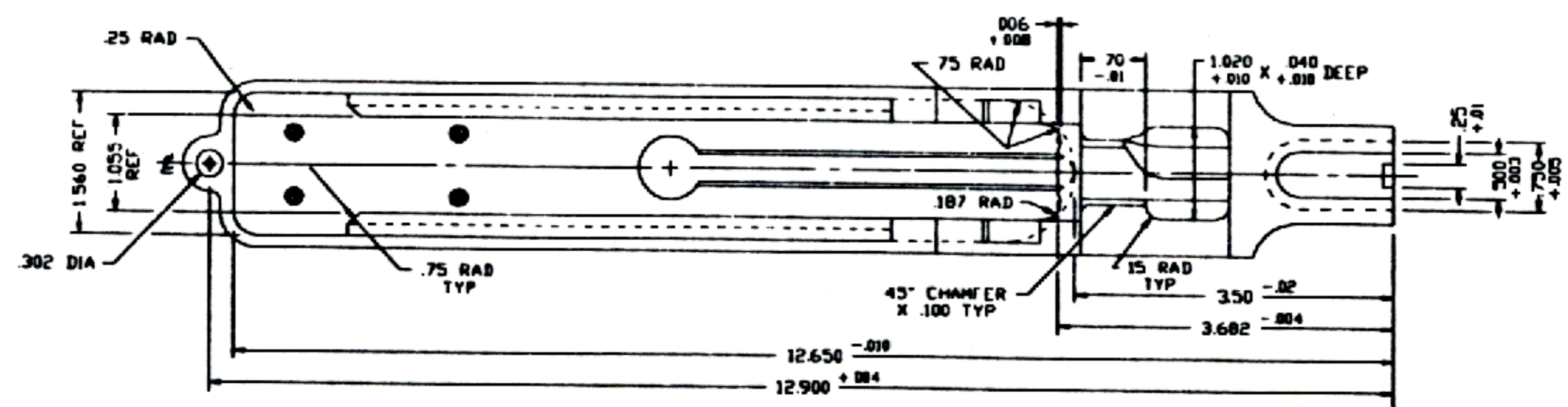
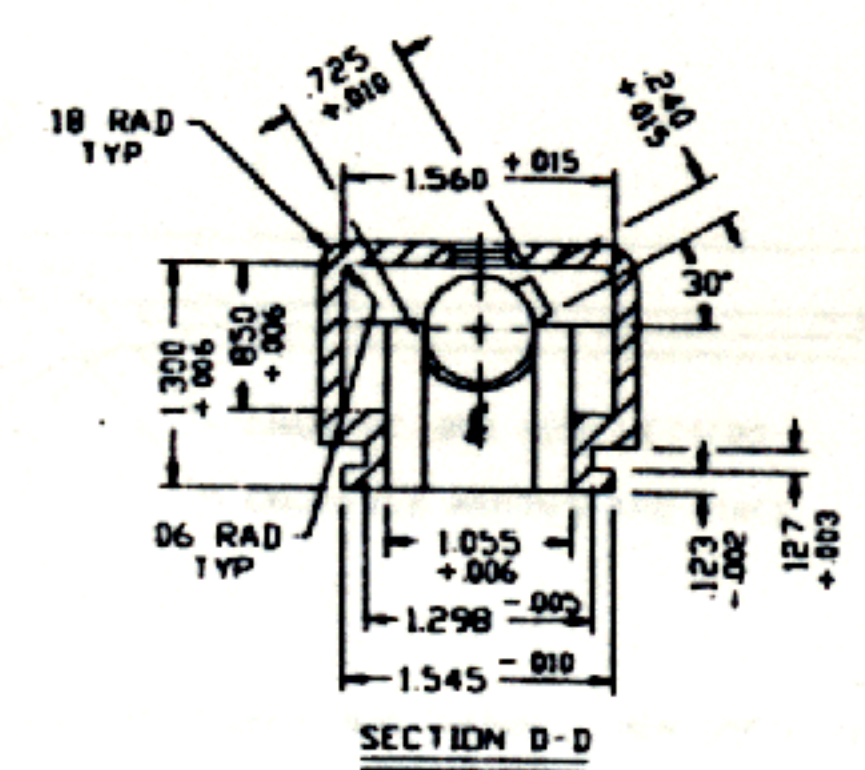
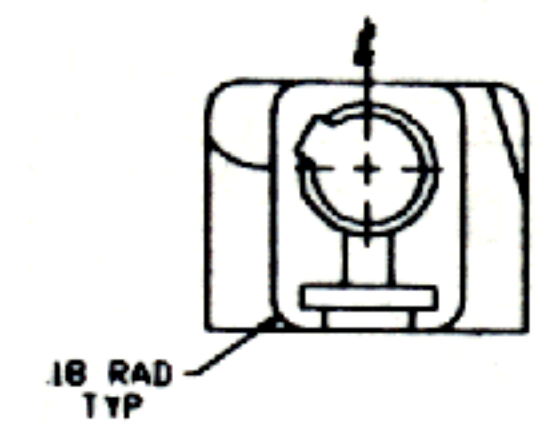
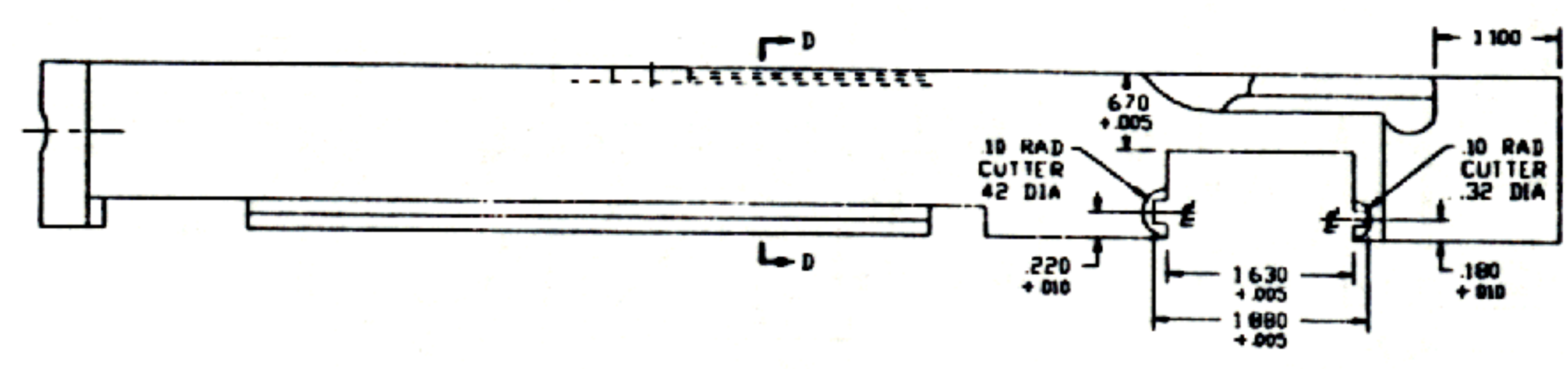
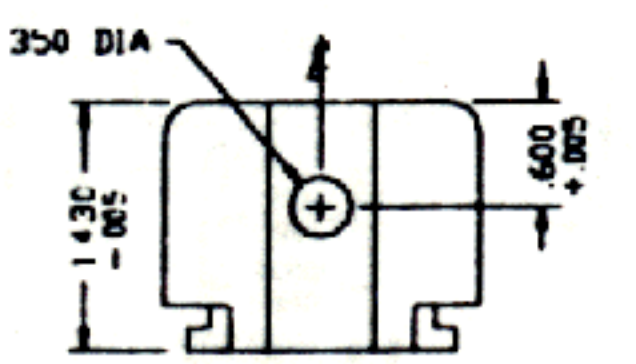
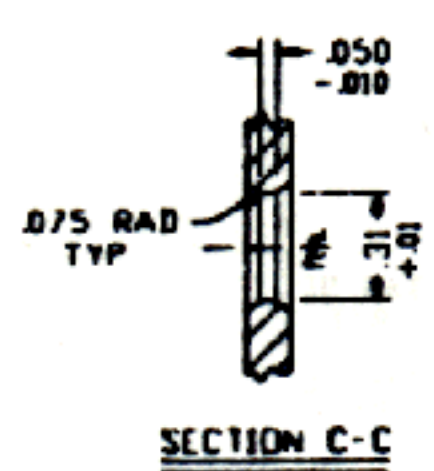
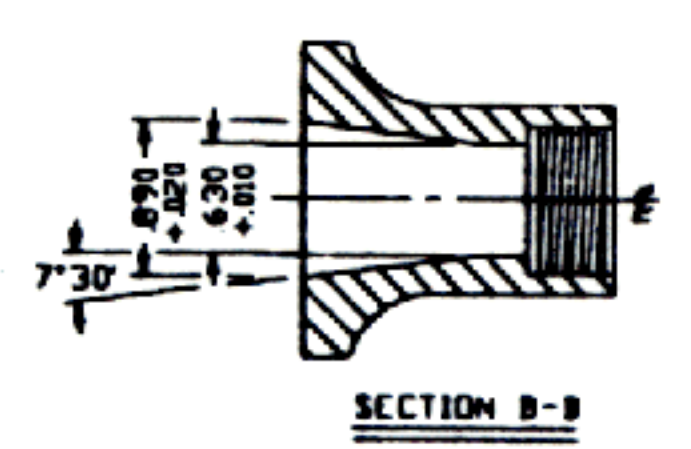
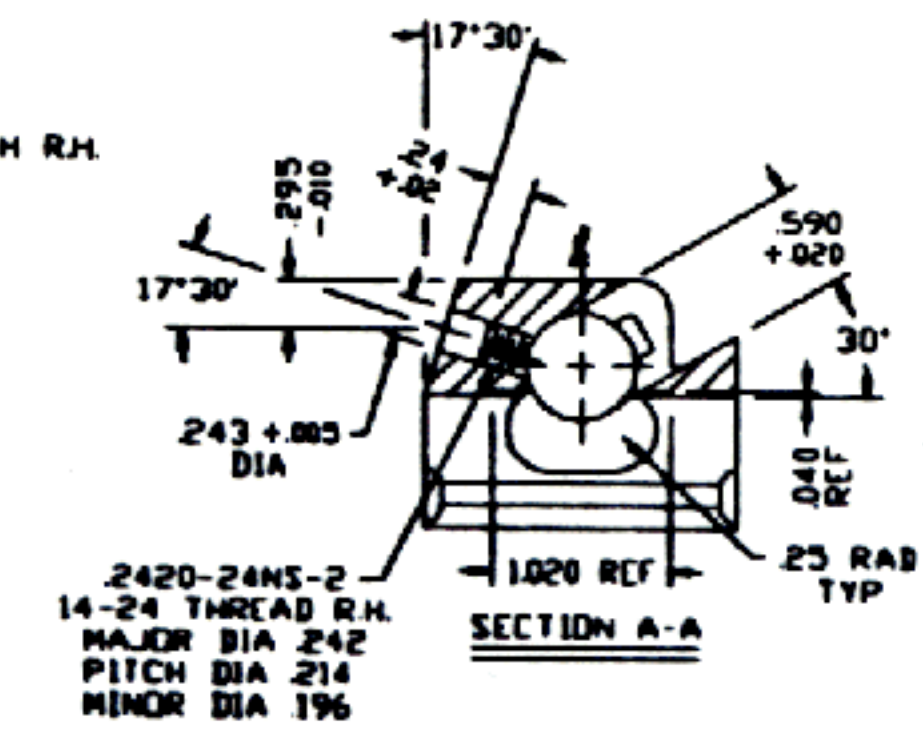
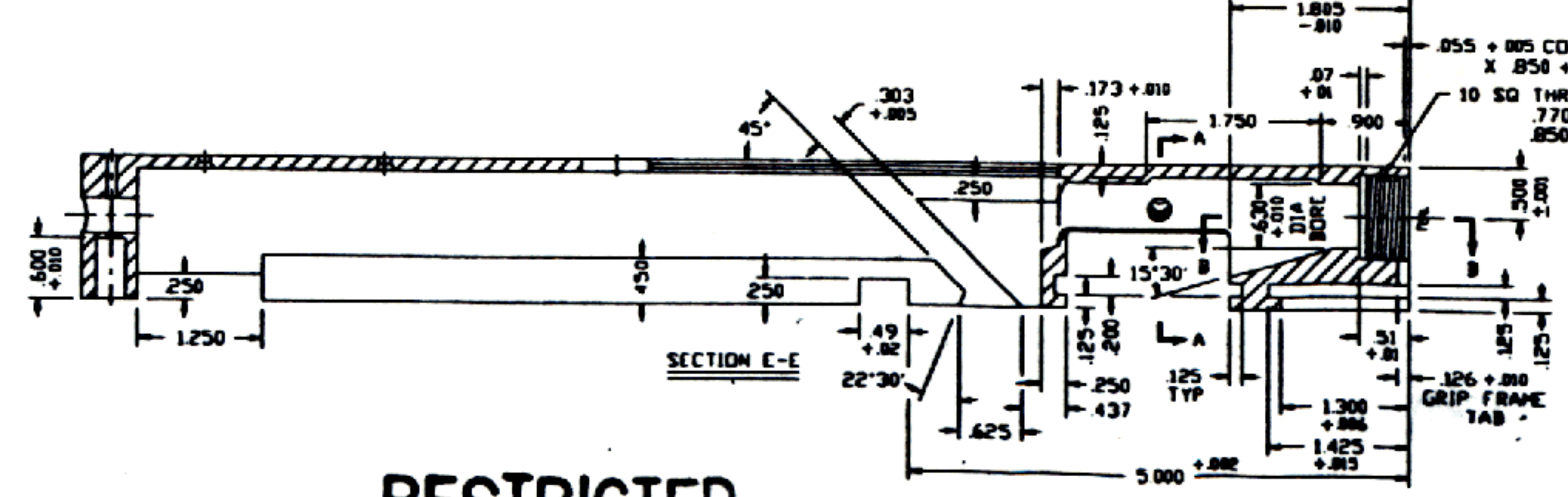


GENERAL NOTES AND SUGGESTIONS

- 1 MATERIAL - 1018-4130 STEEL
- 2 FINISH - PAKERIZE FOR ALL A-1'S
BLUE FOR 2B COMMERCIAL
BUT BY ALL MEANS SUIT YOURSELF.
- 3 BREAK ALL SHARP EDGES
- 4 INSTEAD OF 126 RIVET HOLES I SUGGEST
DRILL # 43 AND TAP # 4-48 THREADS
AND ATTACH REAR SIGHT WITH BUTTON SOCKET CAP SCREWS
- 5 FOR LETTERING REFER TO THE THOMPSON SUBMACHINE
GUN BY ROGER COX.
- 6 CORRECTED FROM 1957 ORDNANCE PRINT WITH CORRECT
DIMENSIONS OF A 1928 THOMPSON RECEIVER.

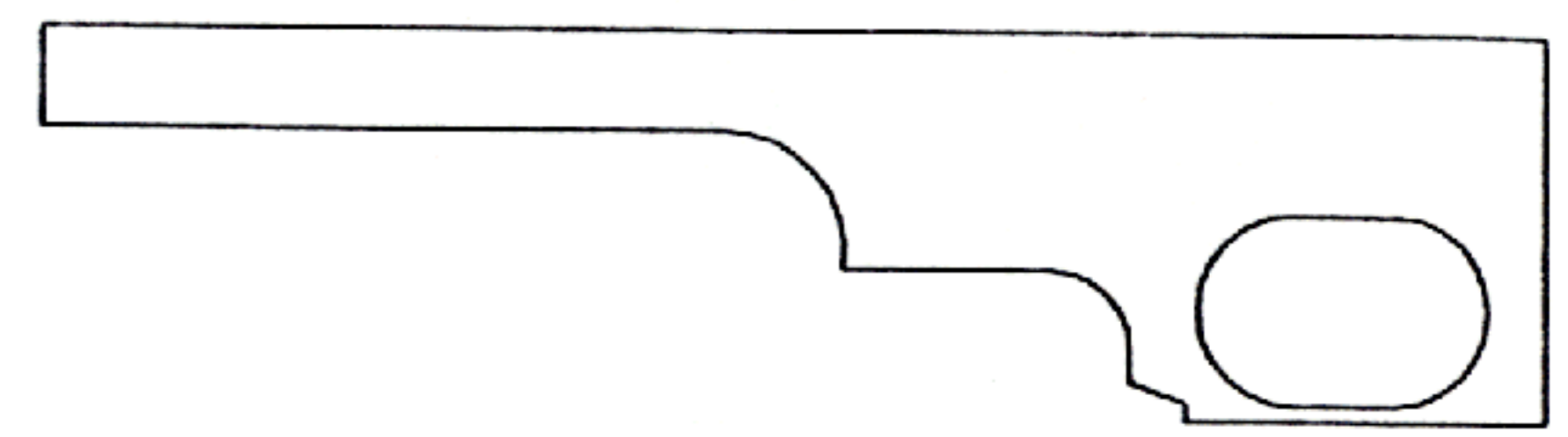
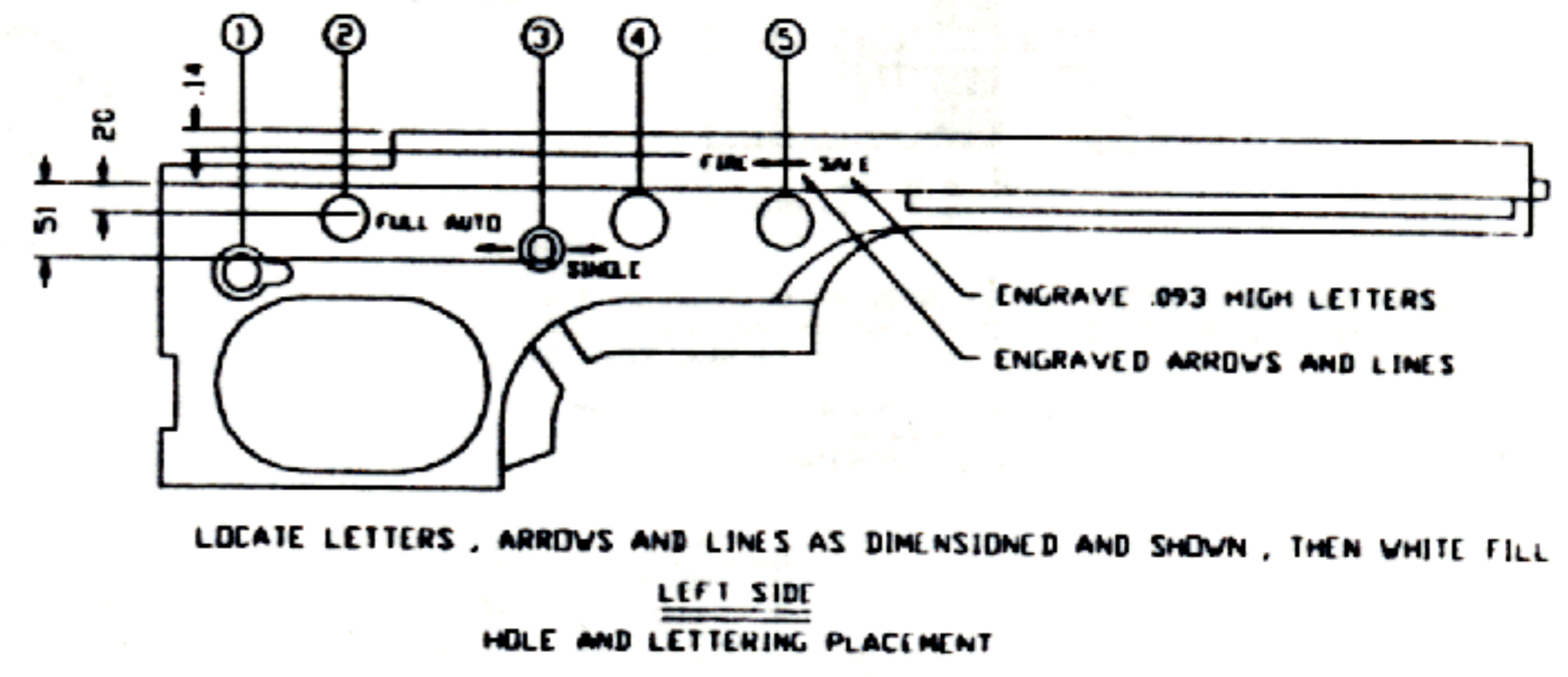
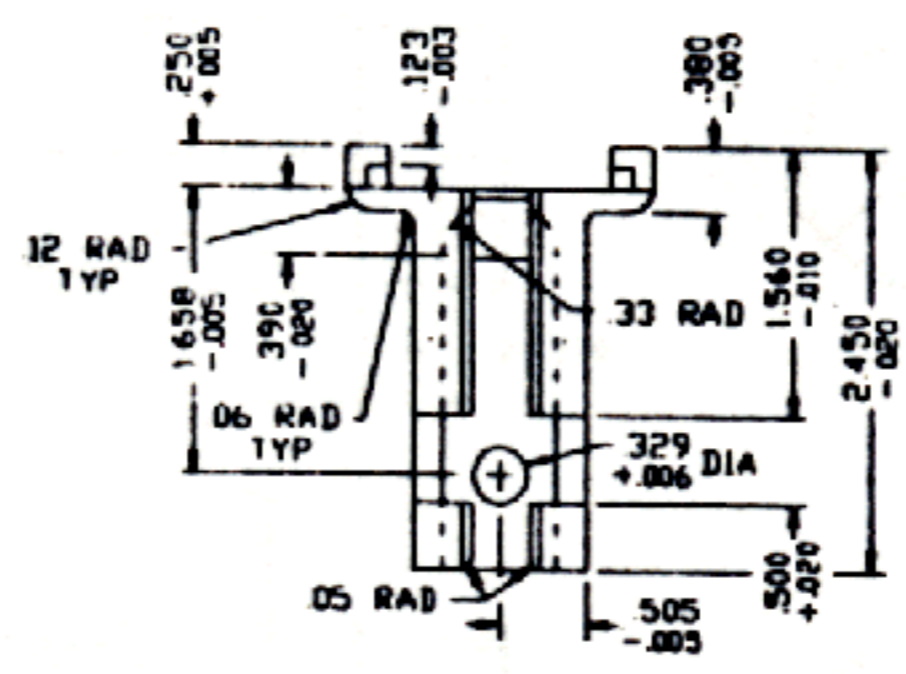
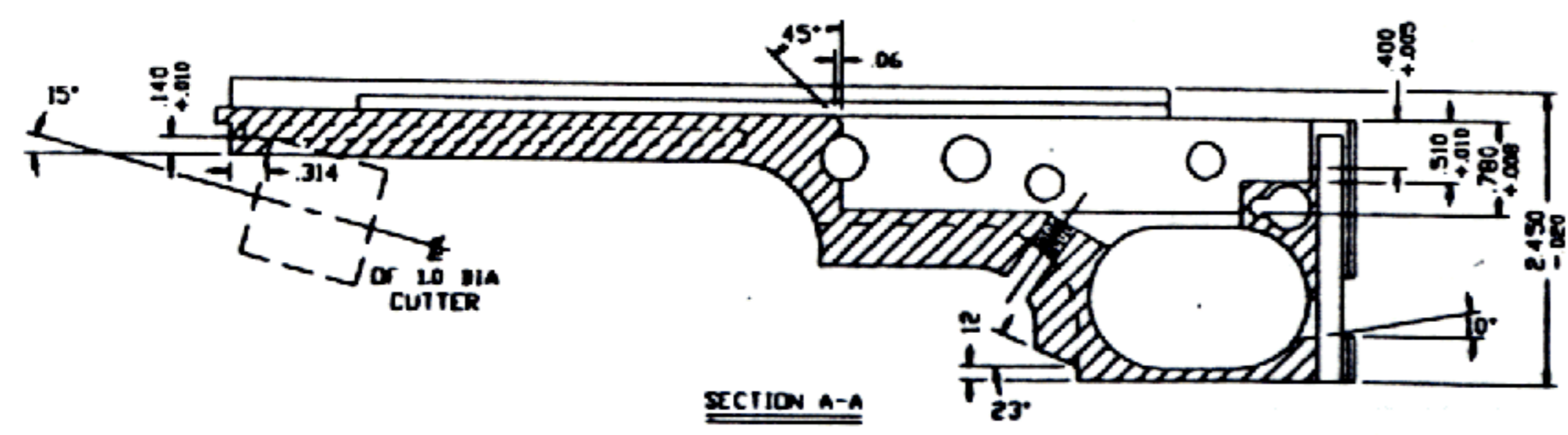
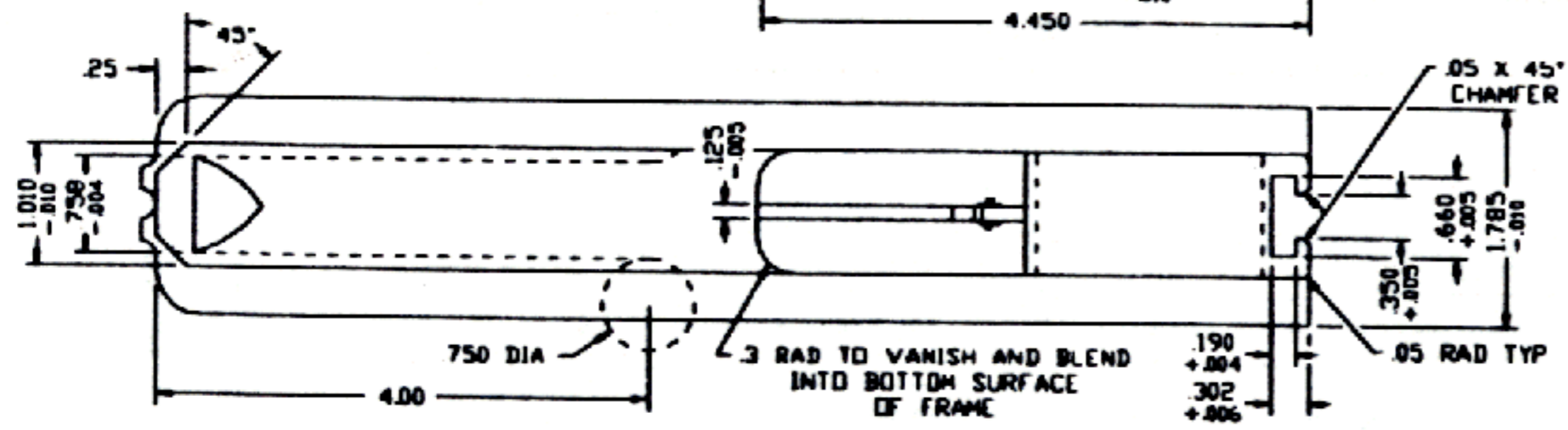
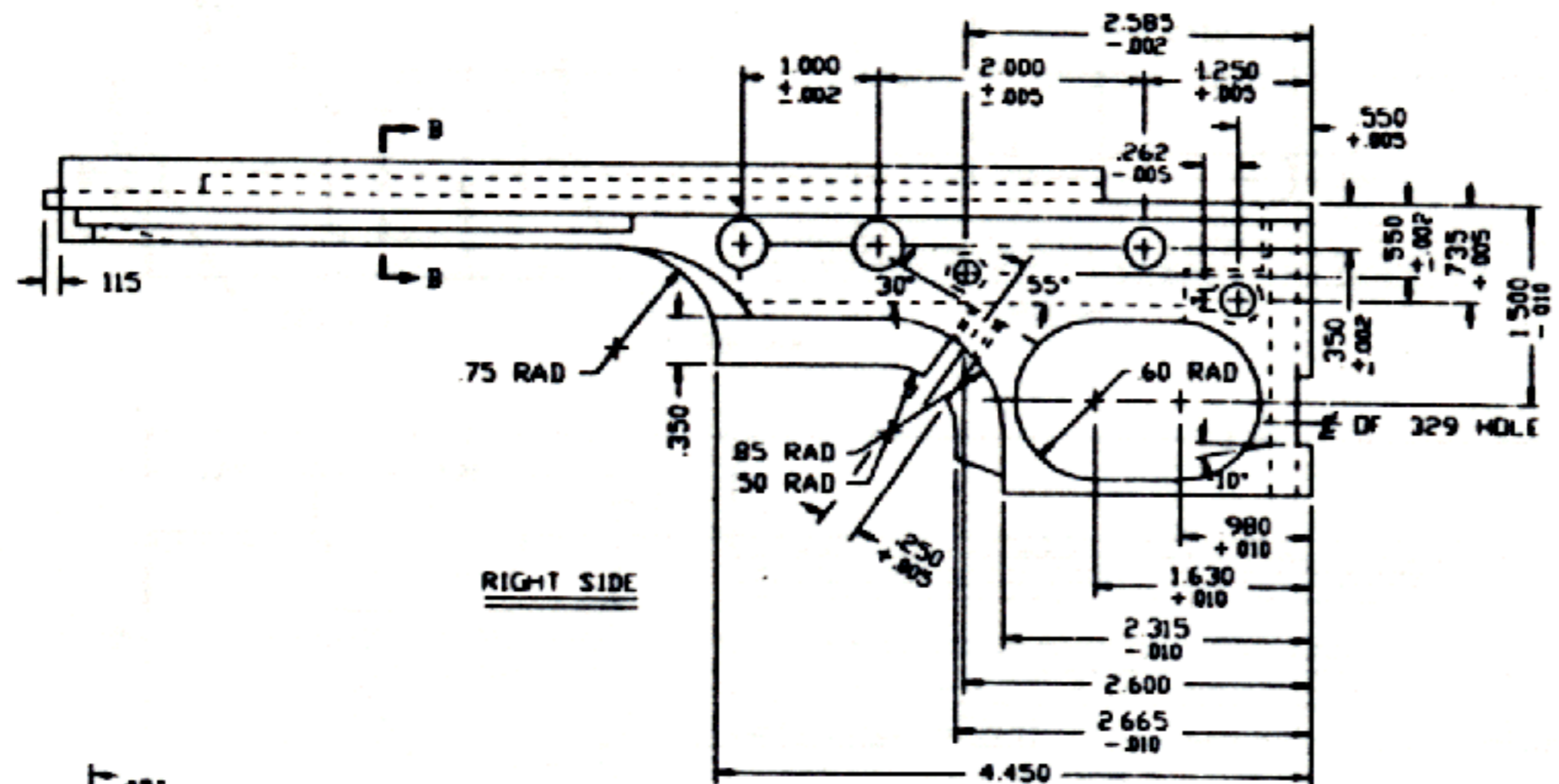
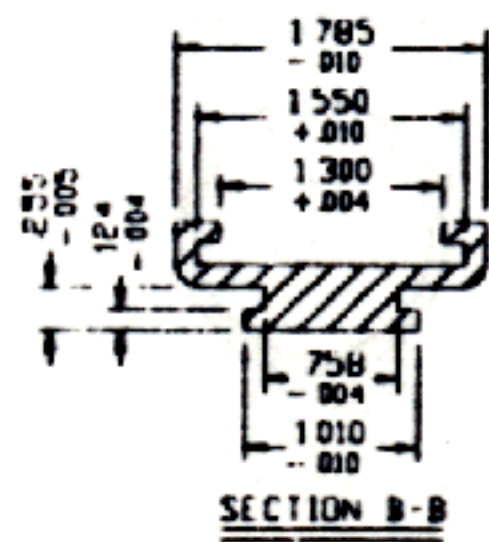
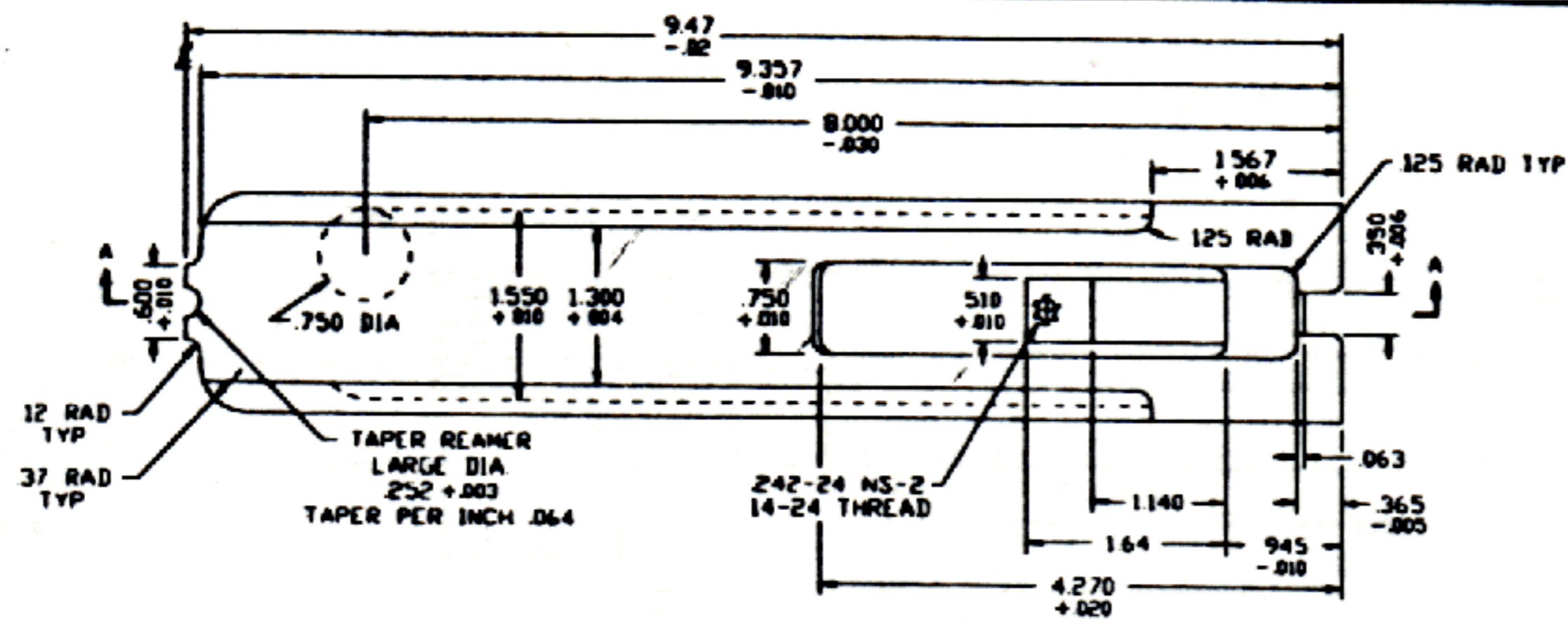


CONFIDENTIAL



**RESTRICTED
MATER A1**

SCALE:	INTERNAL:	CHG:	TOLERANCES:
FULL	SEE NOTE 1		ALL DIMS ± .01
	FINISH	DATE:	ALL DIMS ± .005
	SEE NOTE 2	REV:	ANGLES ± 5°
TITLE		REV.	
THOMPSON SUBMACHINE GUN			
RECEIVER MODEL 1928-A1			



CONFIDENTIAL

RESTRICTED MATERIAL

NOTE:
1 MATERIAL - 1018-4130 STEEL

SCALE: FULL	MATERIAL: SEE NOTE 1	CAD	TOLERANCES
DATE	FINISH	DATE	DEC P.P. ± .005
TITLE: MODEL 1928 THOMPSON SUBMACHINE GUN TRIGGER FRAME		REV.	DEC P.P. ± .005
			DEC P.P. ± .005
			ANGLES ± .0°
			NO